

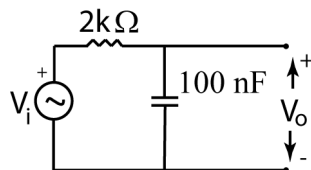
Physics 242 – Electronics

Experiment 3 – RC Low-Pass Filter

Introduction

The complex impedances of the capacitor and inductor depend on frequency. Therefore, AC circuits containing capacitors and inductors can exhibit a frequency-dependence, serving as filters with a frequency-dependent response. Two of the simplest and most useful filter circuits are the RC low-pass and RC high-pass filters, which are in essence frequency-dependent voltage dividers. In this experiment, we will investigate the behavior of single-stage and two-stage RC low-pass filters.

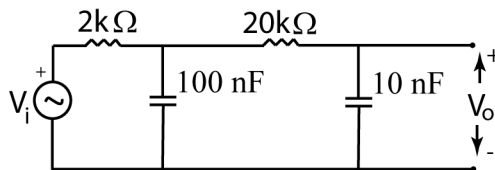
Procedure and Questions



1. Construct the circuit shown above, using a nominally $2\text{ k}\Omega$ resistor and 100 nF capacitor. Measure your component values first, using the LCR meter to measure the capacitance. Set the amplitude of your function generator to 1.0 V peak-to-peak. Measure V_i with the oscilloscope. Then measure the peak-to-peak amplitude V_o carefully with the 'scope at a series of frequencies from 1 Hz to 1 MHz , or whatever is the maximum frequency provided by your signal generator. Since the frequency range spans several orders of magnitude, you'll plot your results on a log scale, so it's most efficient to use frequencies that vary logarithmically, like $1, 2, 5, 10, 20, 50$, etc. Take a few extra measurements around the point where the amplitude of V_o first begins to decrease. Also, calculate the cut-off frequency of the filter (the frequency at which the output voltage is reduced by a factor of $\sqrt{2}$; i.e. where $V_o = \frac{1}{\sqrt{2}} V_i$) and measure the output voltage at the cut-off frequency.

Plot the amplitude ratio in decibels vs. frequency f . Use a log scale for the frequency axis.

Recall that the amplitude ratio in decibels is given by $20 \log_{10} \left(\frac{V_o}{V_i} \right)$. Fit a line to the straight-line part of the plot where the amplitude ratio is decreasing steadily. Is the slope near the predicted value of 20 dB decrease per decade of frequency?



2. Next, build a second low-pass filter stage to follow your existing filter circuit. Use a resistor of nominal value $20\text{ k}\Omega$ and a capacitor of nominal value 10 nF (but measure their actual values

before connecting them into your circuit). For a 1.0 V peak-to-peak input voltage, measure the output voltage as a function of frequency as before (but you need not take extra points around the cut-off frequency this time). Make a plot as before, and measure the slope in the region where it exhibits a linear decrease. What slope value do you find? Is the measured value in accord with your expectations for a two-stage RC low-pass filter? Explain briefly.